

August

Looking for Alaska

Looking for Alaska is a folk-pop duo from Hamilton. Drawing from a diverse range of country, soul, folk and Māori influences, Aaron Gott and Amy Maynard perform hard hitting original music, their songs inspired by their life and travels; complete with exquisite harmonies and acoustic guitar that both whispers and roars.

The duos' familiarity, closeness and authenticity is fuelled by their real-life romance, creating a magnetic performance style that captivates their audience time and time again.

Aaron Gott and Amy Maynard have been 8 years as music tutors in schools around Hamilton, co-owners of The Porch recording studio in Hamilton.



Venue: Versatile and flexible, marae to community hall
 Set up: 2 hours
 Personnel: 2
 Duration: 2 x 50 minute sets
 Price: \$800 + GST (or 70% of gross after reasonable costs whichever is greater)
 Appeal: Music audiences
 Website: www.lookingforalaska.co.nz

September

Austen Found: The Undiscovered Musicals of Jane Austen

"Jane Austen would be turning in her grave with delight... Rollicking good fun!" Rip It Up Adelaide

Addicted to Darcy? Lost all Sense and Sensibility? Bonkers for Big Balls? Well put down your cross-stitching and join Penny Ashton, Lori Dungey and Robbie Ellis, as they swoon, romp, and pianoforte their way through an entirely improvised Austenian Musical. Charming suitors, meddlesome mothers, tight breeches and surprisingly well educated girls will all paint a vivid picture in song, dance and passionate hand holding.

Penny Ashton (Olive Copperbottom, Promise and Promiscuity, Hot Pink Bits) is bringing along her most accomplished improvising friend; Lori Dungey (Lord of the Rings, Xena) and her most melodic musical maestro; Robbie Ellis (Second City Chicago, NZSO Composer) to perambulate the NZ countryside spreading laughter and delightful bonnets as they go. An entirely improvised Austenian Musical.



Venue: A stage preferred but very flexible
 Set up: 1 hour in established venue, 3 hours when full set up of own equipment
 Personnel: 3
 Duration: 60 – 70 minutes, no interval
 Price: \$1,200 + GST (or 70% of gross after reasonable costs whichever is greater)
 Appeal: 25-70 females on balance and couples
 Suitable: Rated PG 14 with Innuendo
 Website: www.hotpink.co.nz

October

Solacium - The Human Kind (THK)

Solacium - The Human Kind (THK), presents an immersive live music and audio-visual experience to saturate your senses. Live music combined with soothing, 4 part vocal harmonies, is played in sync with carefully curated images displayed on screens that express the spectrum of human emotion, in an enveloping four dimensional way traversing sight, sound, space and time.

Solacium turns pain into purpose through creative expression that promotes the four aspects of wellbeing expressed in Hauora; physical, mental/emotional, social and spiritual. Encompassing the holistic principles of Kotahitanga and Whanaungatanga, the interconnectedness of all things, THK creates an inclusive environment allowing the audience to come together and connect with one another in a way that is uplifting for all.

As a creative collective, THK unites singers, musicians, photographers, designers and sound technicians from various cultures and gender identities. Having gained strength through their own mental health challenges, they are now combining their creative forces to raise awareness, and fundraise for organisations that promote mental health, wellbeing and empowerment of individuals in Aotearoa.



Venue: Any suitable theatre, music hall, art gallery, performance venue, boutique movie theatre with screen and stage
 Set up: 3 hours
 Personnel: 6
 Duration: 1 hour 30 minutes, no interval
 Price: \$1,200 + GST (or 70% of gross after reasonable costs whichever is greater)
 Appeal: Music, Movie and Theatre Lovers
 Website: <https://thehumankind.net/>

November

Whirimako Black

Whirimako Black is Aotearoa's undisputed soul diva. With melodies caressed into shape by the language of her ancestors, Whirimako has carved out a musical pathway leading from the mists of the Urewera to the world. She is joined on stage by the multi-instrumentalist Kim Halliday who perfectly complements her with her virtuosity, and Mahina Kau'i's out of this world Taonga Puoro sounds and vocals. *Whirimako Black, with Special Guests, Kim Halliday and Mahina Kau'i*

Whirimako Black - One of New Zealand's most distinctive singers, Whirimako has featured on numerous collaborations with some of the world's most highly regarded musical artists. List of awards include Best Māori Album, Best Jazz Album, and a Silver Scroll award for Best Māori Composition.



Venue: Concert hall, community hall, marae, theatre, house concert, art gallery
 Set up: 2 hours
 Personnel: 3
 Duration: 2 x 45 minutes
 Price: \$1,500 + GST (or 70% of gross after reasonable costs whichever is greater)
 Appeal: World music audiences
 Website: www.rattle.co.nz/artists/whirimako

friendly guidelines

- Return booking form on line at www.aotnz.co.nz under FORMS tab by **Friday September 2** to ensure inclusion.
- Every effort will be made to satisfy demand. Flexibility may be required regarding dates.
- AOTNZ will provide transport, accommodation, artists' daily allowance, promotional material, technical equipment, tour management and national/regional media exposure.
- We strongly recommend that presenters use social media and the printed material we provide to initiate a promotional campaign. It is your responsibility to forward media releases and photographs to local media. Supplied promotional material should not be modified in any way as this may contravene AOTNZ design standards and damage the brand.
- A venue could be a theatre, community hall, marae, school hall, church, hotel, cafe, private home, art gallery or acoustically suitable place.
- In exceptional circumstances fees may be negotiated to take into account limited population, after agreement with artist or group.
- As the presenter, you will be expected to provide the venue, the agreed fee, and a brief report detailing ticket price, response to show and attendance.
- There is no cancellation fee outside four weeks of the commencement of the tour. However, within four weeks, a cancellation will require payment of a 50% penalty fee.
- All fees are exclusive of GST.
- Please call Steve Thomas at AOTNZ, at any stage, to clarify details of any arrangement.

creative *nz*
 ARTS COUNCIL OF NEW ZEALAND TOI AOTEAROA



Box 18688, Christchurch,
 New Zealand
 Mobile: 0274 386 154
 email: aotnz@xtra.co.nz
www.aotnz.co.nz

creative *nz*
 ARTS COUNCIL OF NEW ZEALAND TOI AOTEAROA



Central Lakes
TRUST

THE LION
 FOUNDATION

Community
 Trust South
TE POU ARATAKI POUINAMU O MURIKU

InterIslander

AOTEAROA
 GAMING
 TRUST

Community
TRUST
Mt & South Canterbury

Rātā
 Foundation

OTAGO
 Community Trust

Live and
Local
 Top Acts
 to Top
Towns

MENU 2023

February February

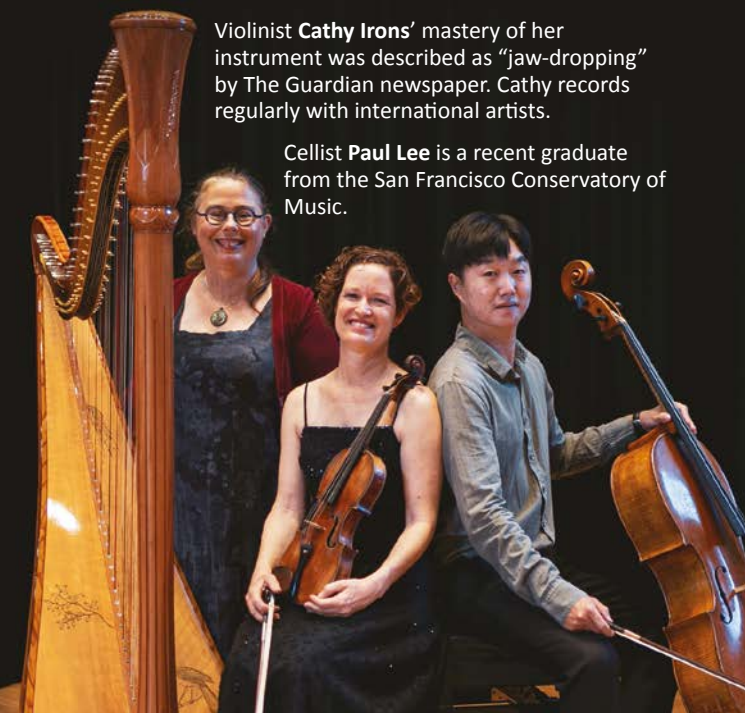
Nikau Harp Trio

Nikau Harp Trio brings to life the glittering magical world of harp and strings. In mesmerizing performances, the trio journeys from baroque, fantasy and romance to the pulsating latin rhythms of the tango.

Principal Harp in the Christchurch Symphony Orchestra, **Helen Webby** is one of New Zealand's most accomplished harpists. Her solo CD *Pluck* was nominated for "Best Classical CD" in the NZ Music Awards.

Violinist **Cathy Irons'** mastery of her instrument was described as "jaw-dropping" by The Guardian newspaper. Cathy records regularly with international artists.

Celloist **Paul Lee** is a recent graduate from the San Francisco Conservatory of Music.



Venue: Any suitable theatre, music venue, art gallery, house concert, community hall, church on floor level or a stage, not carpeted, stairs can be a problem for the harp
Set up: 1.5 hours
Personnel: 3
Duration: 2 x 40 minute sets
Price: \$900 + GST (or 70% of gross after reasonable costs whichever is greater)
Appeal: Festivals, parties, soirees, house concerts
Website: <https://cathy.ironz.nz/>

March March

Hanna

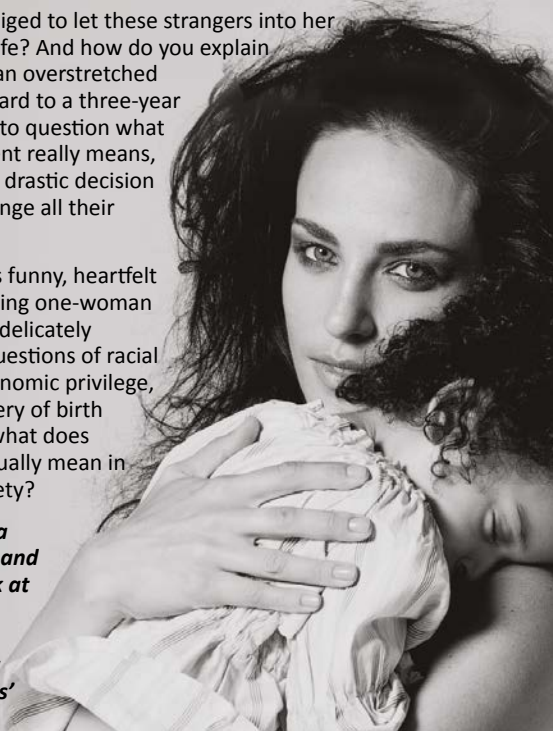
Jennifer Ward-Lealand directs *Cassandra Woodhouse* in the acclaimed one woman play, *Hanna*, by Sam Potter.

Being a young mum is supposed to be hard - but for Hanna, the only thing she's ever been brilliant at is raising her beloved daughter, Ellie. But then a DNA test reveals staggering news: Ellie is not Hanna's child - and now her 'real' parents want to meet.

Is Hanna obliged to let these strangers into her daughter's life? And how do you explain a mix-up in an overstretched maternity ward to a three-year old? Forced to question what being a parent really means, she makes a drastic decision that will change all their lives.

Sam Potter's funny, heartfelt and compelling one-woman play, *Hanna* delicately weaves in questions of racial identity, economic privilege, and the lottery of birth - and asks: what does "family" actually mean in today's society?

'Gripping... a memorable and moving look at nature and nurture and what family really means'
- The Times



Venue: Theatre, Stage, Hall, Community Hall, Art Galleries
Set up: 2 hours
Personnel: 2
Duration: 1 hour 40 minutes, no interval
Price: \$1,200 + GST (or 70% of gross after reasonable costs whichever is greater)
Appeal: General Audience, Theatre, Parenting / support groups
Website: www.nztheatrecompany.com

April April

The Boy with Wings

Using puppetry, songs, storytelling, and exquisite hand-crafted sets that magically unfold out of boxes, award-winning theatre company 'Birdlife Productions' promise laughter, tears and thrilling adventure when a young man's epic journey unites with the miracle of Kuaka/Bar-tailed Godwit migration. In this high-tech fast-paced digital world, 'The Boy with Wings' offers families a counter to 'screen time' that allows space in 'real-time' for children to watch, listen and reflect. Melded with a real-time ornithological lecture, this is a comic, touching, and environmental story using the ageless wonder of puppetry that dares us all to follow our dreams! Designed specifically for children ages 5 to 9 years, but loved by all ages!

"It's a gem of a puppet show! The set is like nothing I've ever seen before. The Sanders know how to construct beautiful worlds from your everyday cardboard box"
- Ines Maria Almeida, Theatreview, March 2021

"We gave it 1,000 out of 1,000!"
- Karen ward, South New Brighton School



Venue: Community hall, theatres etc. indoors. Best with children seated on floor
Set up: 90 minutes set up/40 mins pack down. Provide all own Lighting etc.
Personnel: 2
Duration: 50 minutes, no interval
Price: \$800 + GST (or 70% of gross after reasonable costs whichever is greater)
Appeal: Families, Education and Environmental groups, Theatre/Puppet enthusiasts
Website: www.birdlifeproductions.co.nz/the-boy-with-wings.html

May May

NZ String Quartet

Heartfelt, soulful and full of life. The NZ String Quartet bring an eclectic and vibrant mix of music that promises to excite and entertain: from familiar classical favourites, to spicy contemporary works and a few hidden gems. Imbued with their signature performance flair, each programme is interspersed with lively and engaging introductions, illuminating the stories behind the music. Join the NZ String Quartet for an intimate and atmospheric night to remember - world-class music right here at home in Aotearoa New Zealand.

"...a never-to-be-forgotten experience for all who attended."
- Elizabeth Bouman, Otago Daily Times

Celebrating its 35th season in 2022, the New Zealand String Quartet has an established international reputation for its insightful interpretations and compelling communication.

Helene Pohl (violin I), Monique Lapins (violin II), Gillian Ansell (viola), Rolf Gjelsten (cello).



Venue: Any suitable theatre, music venue, art gallery, house concert, community hall, church, not carpeted
Set up: 2 hours (includes set-up and short rehearsal)
Personnel: 4
Duration: 90 minutes (with interval)
Price: \$1,700 + GST (or 70% of gross after reasonable costs whichever is greater)
Appeal: General music audiences, RNZ Concert listeners, contemporary music audiences young and old
Website: www.nzsq.org.nz

June June

Jackie Goes Prima Diva

Homegrown chanteuse Jackie Clarke turns her powerhouse vocals, wicked humour and maverick entertainment style to interpret the songs of the 20th and 21st Centuries most legendary divas.

Ms Clarke pays homage to Judy Garland, Shirley Bassey, Peggy Lee, Barbra Streisand and more! From Alberta Hunter to Dolly Parton, from Kate Bush to Lady Gaga, Jackie lets her diva flag fly, while playfully interacting with the audience with trademark witty panache.

Accompanied by piano maestro Grant Winterburn, expect iconic songs performed with tender soul and gleeful virtuosity.

Don't miss this rollicking show of bravura song styling, dazzling frackage, pin-drop moments and plenty of laughs from a NZ dairy-fed Diva with her feet on the ground and her head amongst the stars.



Venue: Any theatre, hall, gallery space or house concert. Suitable for cabaret style seating and/or theatre style seating.
Set up: 2 hours
Personnel: 3
Duration: 2 x 45 minute sets
Price: \$1,250 + GST (or 70% of gross after reasonable costs whichever is greater)
Appeal: Music, theatre audiences who like to have a laugh and maybe shed a tear
Website: www.jackieclarke.co.nz

July July

ARO

"He Rākau, He pepeke" – (where there are trees, there are insects) is made up of husband and wife *Charles Looker* (Ngāpuhi, Te Rarawa, Ngāti Te Ata, Te Ati Awa) and *Emily Looker* (nee Rice). The bilingual duo shares a passion for the power of language and music to tell stories and remind us of our cultural identity. Enjoy the storytelling waiata of Emily and Charles of Aro as they present their new album 'He Rākau, He Pepeke', a collection of new songs celebrating stories of our native trees and insects of Aotearoa, along with award-nominated waiata about the native birdlife of this land and songs inspired by marine life that live in the waters off the coasts of this stunning country.

This refreshing performance includes elements of folk, soul, haka, and a touch of jazz to bring audiences of all ages together in a celebration of the natural world that surrounds us. Aro perform songs in a mix of Te Reo Māori and English, blending the two worlds of Charles and Emily in song.



Venue: Intimate venues and small theatres, spaces appropriate for our storytelling show, marae and community hubs
Set up: 3 hours
Personnel: 2
Duration: 1 hour 30 minutes (with a short break in between)
Price: \$900 + GST (or 70% of gross after reasonable costs whichever is greater)
Appeal: Original songs in te reo for audiences anywhere
Website: <https://aromusic.co.nz>